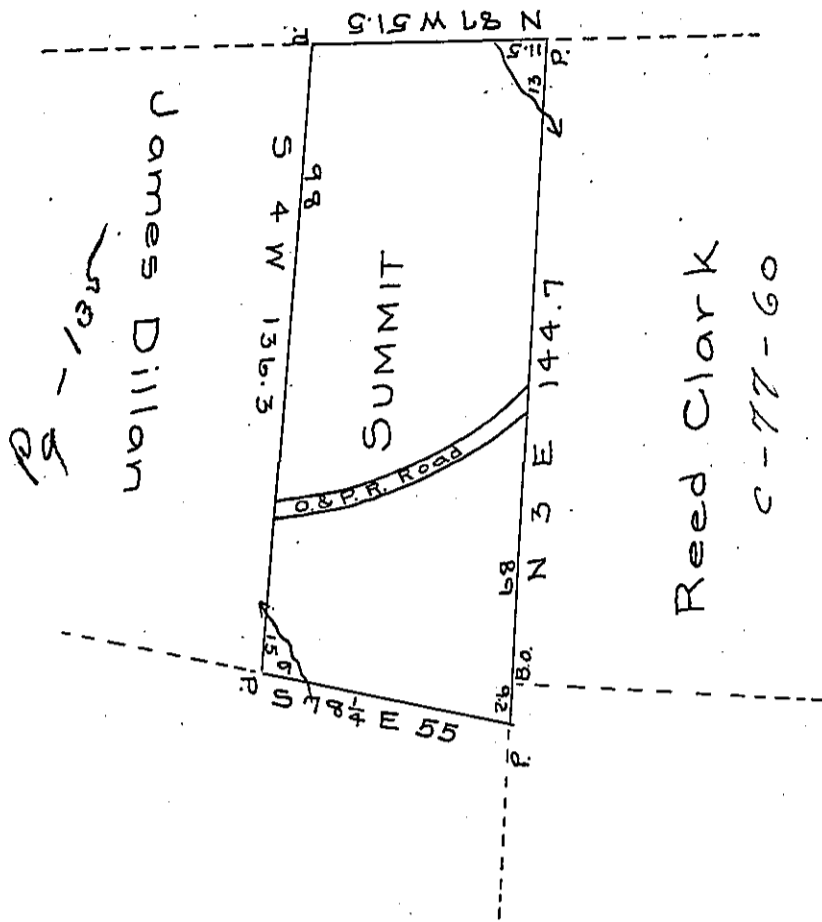


Johnathan Mifflin's Warrant



The above draught represents a resurvey made November 10th AD. 1853 of part of a tract of land situate in Big Beaver township, which said tract was surveyed the 8th December 1794 in pursuance of a warrant granted William Miller dated 14th April 1792. The said described part was surveyed for Reed Clarke and contains 44 acres 11 perches and allowance of 6 per cent.

To the Hon. J. Porter Brawley } Azariah Wynn C.S.
Surveyor General Pa.

Note - The above draught represents the same piece of land conveyed by the Farmers and Mechanics Bank to William Clarke by deed dated 23rd September 1833.

A. W.

IN TESTIMONY that the above is a copy of the original remaining on file in the Department of Internal Affairs of Pennsylvania, made conformably to an Act of Assembly approved the 16th day of February, 1833, I have hereunto set my Hand and caused the Seal of said Department to be affixed at Harrisburg, this seventh day of May 1906.

George R. Brown
Secretary of Internal Affairs.